

Health Information Exchange and Telehealth: Opportunities for Integration

Broadband Telemedicine Summit
May 20, 2013

Laura Zarembo, Director
Governor's Office of Health Information Technology



Illinois' Health Care Policy Challenges



- High rate of growth in health care expenditures
- Highly-fragmented, uncoordinated care
- Poor quality and health outcomes
- Population health disparities
- Lack of actionable data available at point of care
- Lack of sufficient data for public health officials



Key Drivers of ILHIE Implementation

- Governor Quinn's health care transformation agenda
 - Medicaid care coordination, quality improvement
 - Support for community based care
- State law creating a statewide HIE network
- Federal HITECH Act
 - EHR incentives for physicians and hospitals
 - HIE infrastructure funding
 - Broadband funding
- Affordable Care Act Implementation



To Many, HIE Still Means....



What do we mean by EHR and HIE?

- Electronic Health Record (EHR) – a real-time electronic record of health-related information for an individual that conforms to nationally recognized interoperability standards, and can be managed and consulted by authorized clinicians across multiple health care organizations
- Health Information Exchange (HIE) – the electronic movement of health information among organizations according to nationally recognized standards



Goals of the Illinois Health Information Exchange



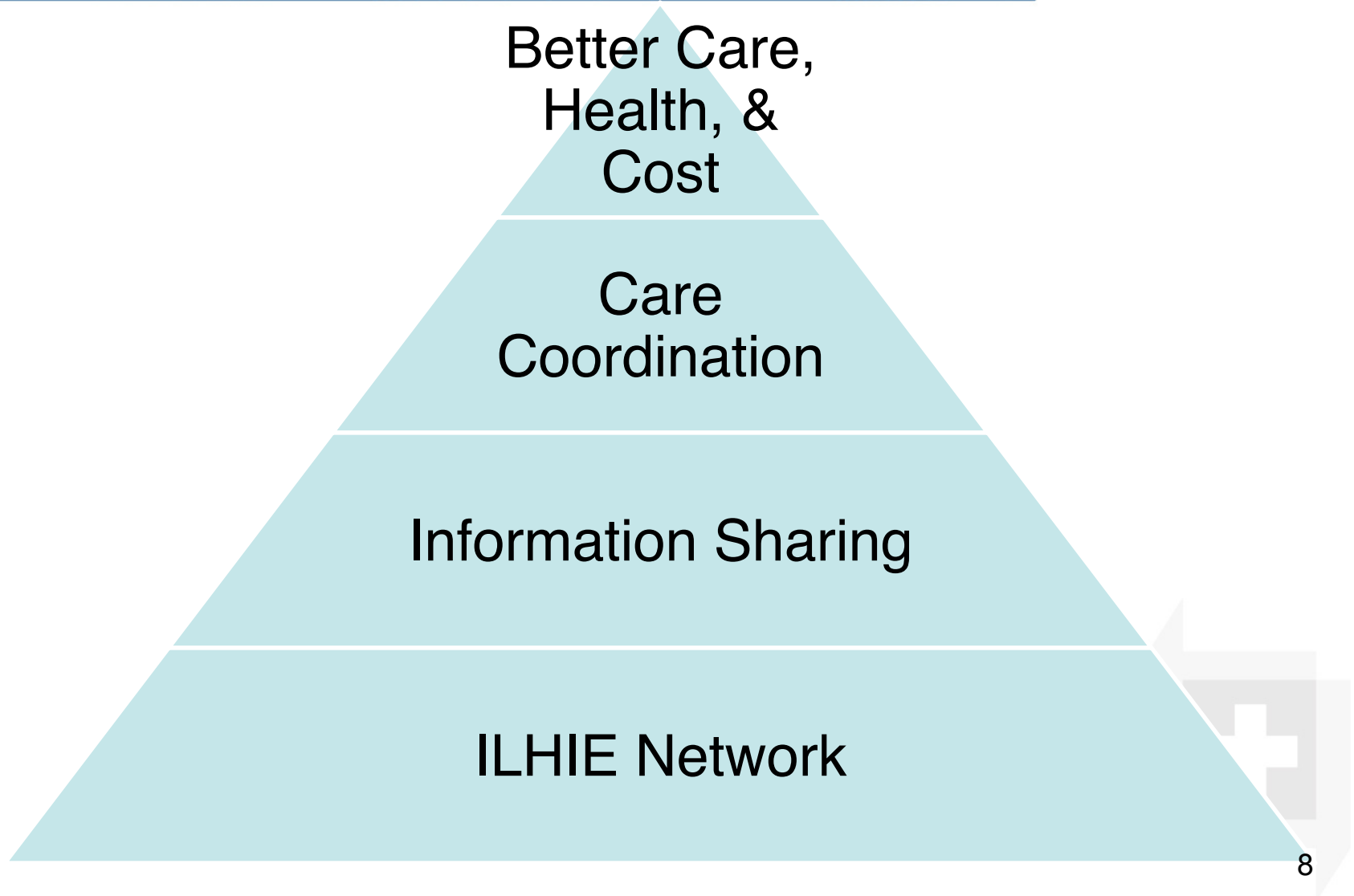
- Improve health care quality and outcomes
- Control the cost of health care and enhance value for patients and payers
- Maximize federal health information technology funding to Illinois and its health care providers
- Enhance public health and disease surveillance; reduce disparities



Who Benefits?

- Patients: facilitates more coordinated care, better outcomes, patient access and involvement
- Providers: allows secure sharing of vital information at the point of care
- Payers: reduces costly medical errors, duplicative procedures and treatments and ineffective, uncoordinated care





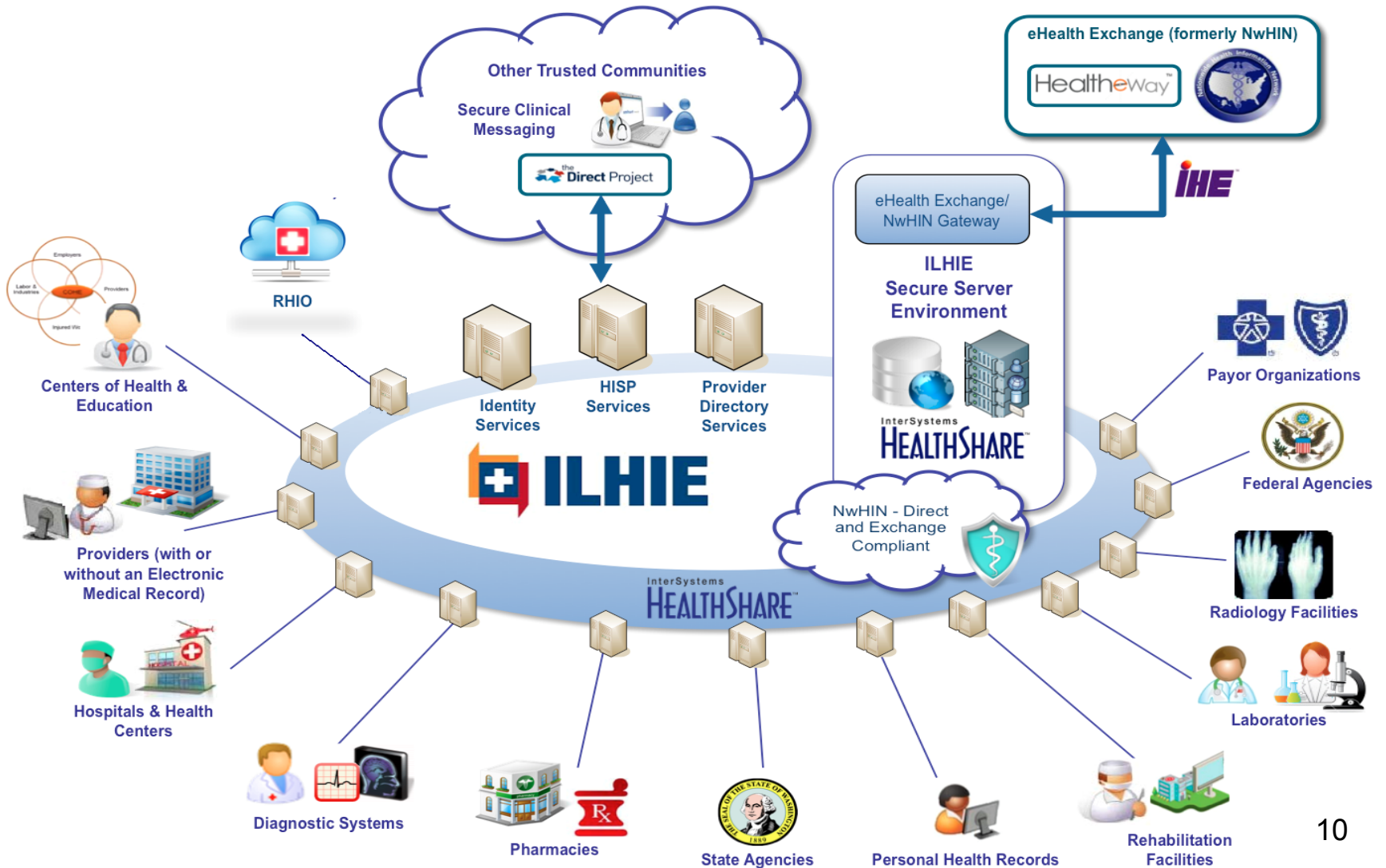
What is the “Illinois Health Information Exchange (ILHIE)?”



- The statewide health information exchange network created by statute in 2010
- Core services and standards operated and governed by the Illinois HIE Authority
- A hub for secure communications and message routing to ensure connectivity among local and enterprise HIEs
- Means of electronic exchange with State health information technology systems



ILHIE Connectivity Landscape



What does ILHIE offer?

- ILHIE Direct, Secure messaging
- Statewide Directories/Registries
 - Master Patient (Person) Index (MPI)
 - Provider Directory
 - Public Health Node
- Medical Record Aggregation
 - Acquires all patient records available via ILHIE
- Privacy, security & consent services
- Platform for service extensions
 - Opportunities for entrepreneurs



- HIEs that provide query-based access to vital patient records at the point of care can support telehealth
- Secure clinical messaging allows information and documents to be transmitted to any user on the network
- Innovative use cases are in early stages of development
- Great potential for future synergies and alignment of technology and clinical workflows

Challenges and Opportunities

- Rapidly evolving landscape
- High demand, low-supply of technical resources
- Competition within health care organizations for resources to support health information technology and telehealth
- Both are still relatively early on the adoption curve
- Potential for patient engagement



More Information



- Visit our website
 - www.ilhie.org
- Join our listserv

