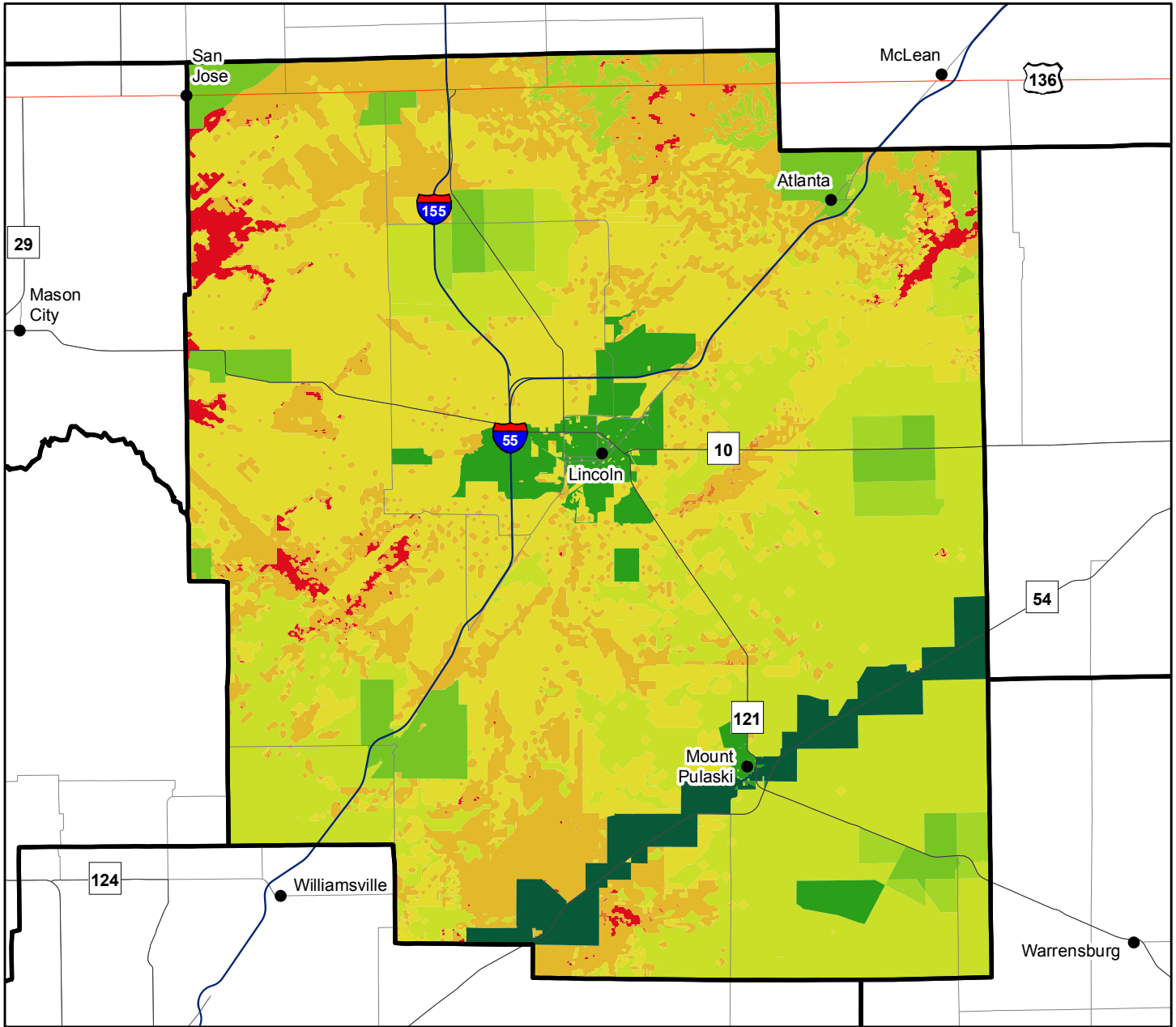




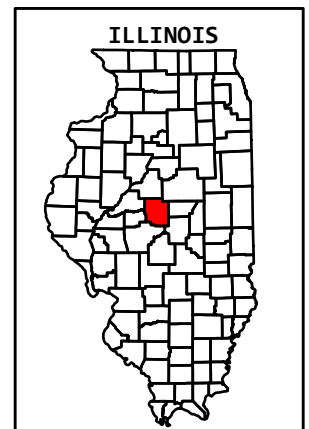
# Logan County

Round Seven – Data Current as of December 31, 2012  
(excluding Satellite and Cellular Data)



- |  |   |  |  |
|--|---|--|--|
|  | Greater than or equal to 1 Gbps                         |  | Greater than or equal to 6 Mbps and less than 10 Mbps    |
|  | Greater than or equal to 100 Mbps and less than 1 Gbps  |  | Greater than or equal to 3 Mbps and less than 6 Mbps     |
|  | Greater than or equal to 50 Mbps and less than 100 Mbps |  | Greater than or equal to 1.5 Mbps and less than 3 Mbps   |
|  | Greater than or equal to 25 Mbps and less than 50 Mbps  |  | Greater than or equal to 768 kbps and less than 1.5 Mbps |
|  | Greater than or equal to 10 Mbps and less than 25 Mbps  |  | No Broadband Service                                     |

Partnership for a Connected Illinois  
April 09, 2013



**broadbandillinois.org**



**DISCLAIMER:** This map is meant to be used for preliminary review purposes only. The information depicted on this map is based on a limited amount of available data, and thus there are inherent inaccuracies. As more complete data is collected, the map will be updated and will contain more accurate information. This map should not be used to make any decisions regarding the served, underserved, and not served areas. The NTIA definition of Broadband is greater than or equal to 768kbps at this time. (c) 2012 The Partnership for a Connected Illinois and/or the State of Illinois