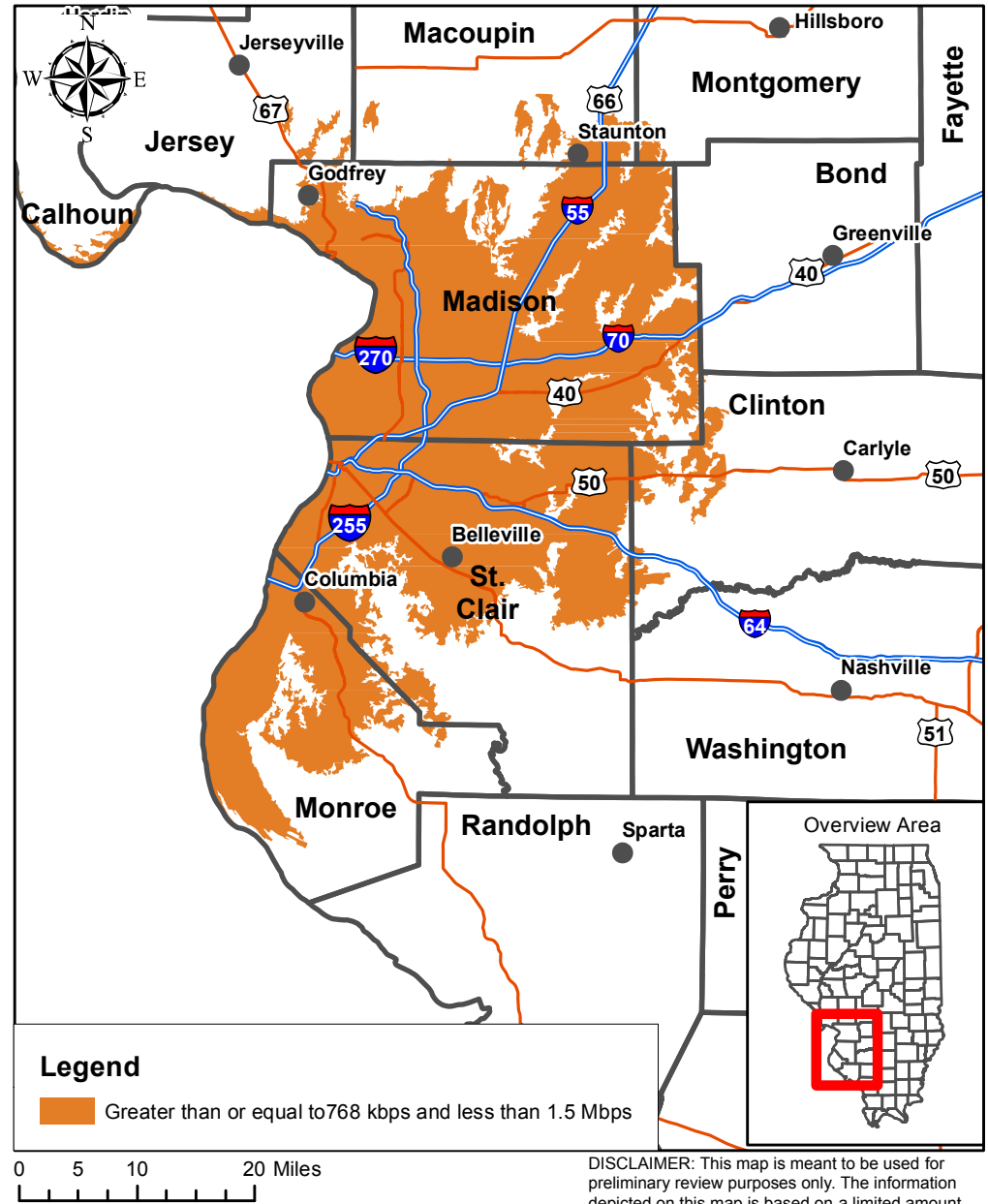
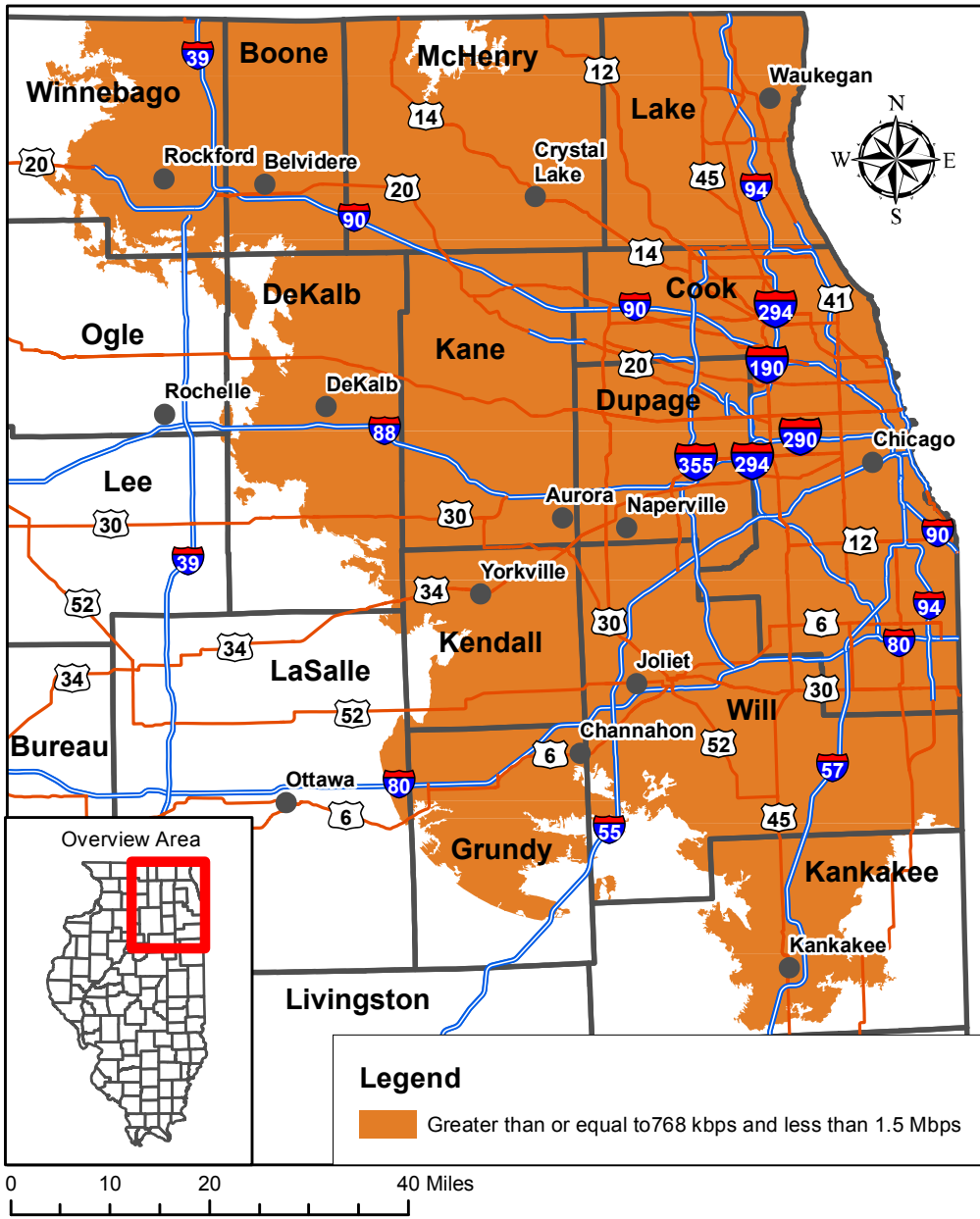




# Leap Wireless International, Inc., Cricket Communications, Inc.

## Maximum Advertised Download Speed

Round Seven – Data Current as of December 31, 2012



Partnership for a Connected Illinois - June 20, 2012

DISCLAIMER: This map is meant to be used for preliminary review purposes only. The information depicted on this map is based on a limited amount of available data, and thus there are inherent inaccuracies. As more complete data is collected, the map will be updated and will contain more accurate information. This map should not be used to make any decisions regarding the served, underserved, and not served areas. At this time, the NTIA definition of Broadband is greater than or equal to 768 Kbps. (c) 2012 The Partnership for a Connected Illinois and/or the State of Illinois