



Data and Maps

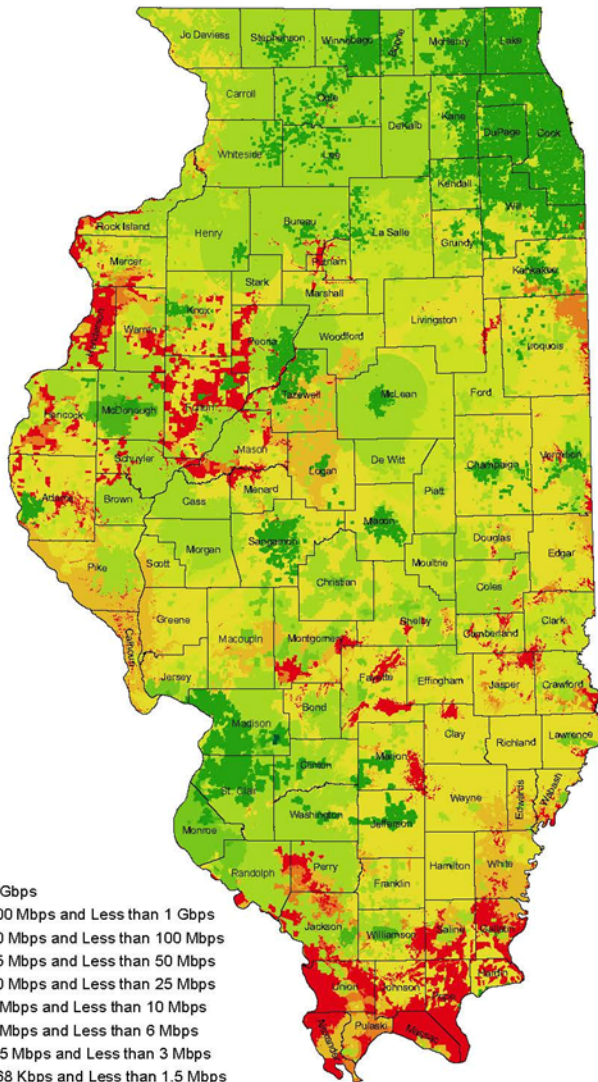
Round 6 is Approaching

- PCI Looks Forward to Working with the ITA
- Feel Free to Contact PCI with Mapping Help
- PCI Begins its outreach the first week of July
- Round 6 – Everything Current as of June 30, 2012
- Fresh updated Provider Maps sent out to carriers
- NTIA Submission October 1, 2012

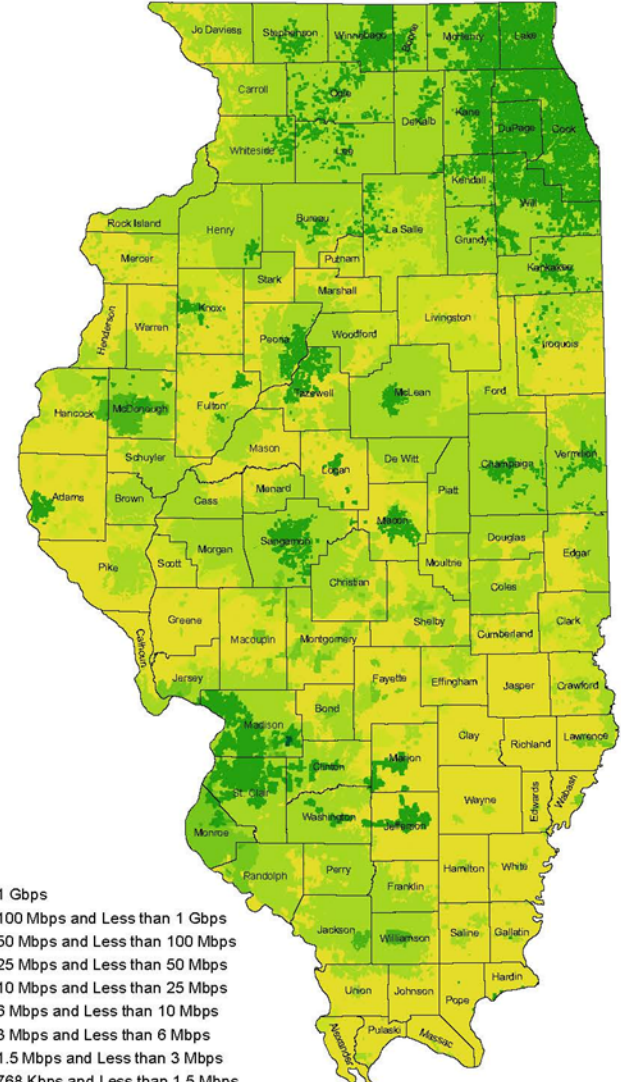
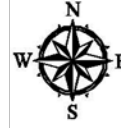
- Steve Dryden
GIS Database Technician
217-645-6080 (Office)
217-259-5936 (Cell)
steve.dryden@broadbandillinois.org



Maximum Advertised Download Speed Tiers



- Greater than or Equal to 1 Gbps
- Greater than or Equal to 100 Mbps and Less than 1 Gbps
- Greater than or Equal to 50 Mbps and Less than 100 Mbps
- Greater than or Equal to 25 Mbps and Less than 50 Mbps
- Greater than or Equal to 10 Mbps and Less than 25 Mbps
- Greater than or Equal to 6 Mbps and Less than 10 Mbps
- Greater than or Equal to 3 Mbps and Less than 6 Mbps
- Greater than or Equal to 1.5 Mbps and Less than 3 Mbps
- Greater than or Equal to 768 Kbps and Less than 1.5 Mbps
- No Service



- Greater than or Equal to 1 Gbps
- Greater than or Equal to 100 Mbps and Less than 1 Gbps
- Greater than or Equal to 50 Mbps and Less than 100 Mbps
- Greater than or Equal to 25 Mbps and Less than 50 Mbps
- Greater than or Equal to 10 Mbps and Less than 25 Mbps
- Greater than or Equal to 6 Mbps and Less than 10 Mbps
- Greater than or Equal to 3 Mbps and Less than 6 Mbps
- Greater than or Equal to 1.5 Mbps and Less than 3 Mbps
- Greater than or Equal to 768 Kbps and Less than 1.5 Mbps
- No Service



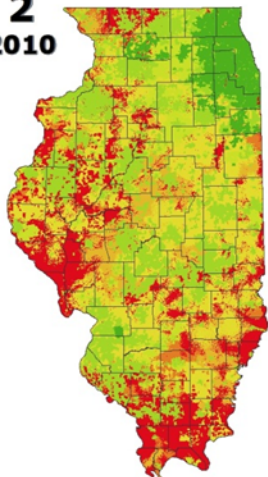
broadbandillinois.org

Speed Tier Map by Round

(Excluding Satellite and Cellular)

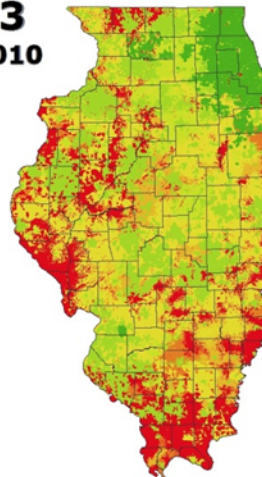
Round 2

June 30, 2010



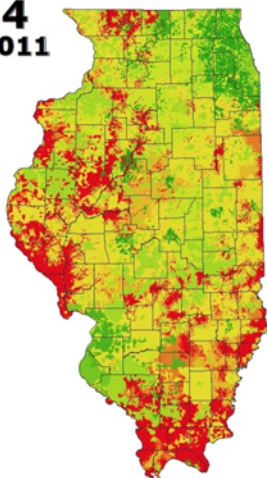
Round 3

Dec. 31, 2010



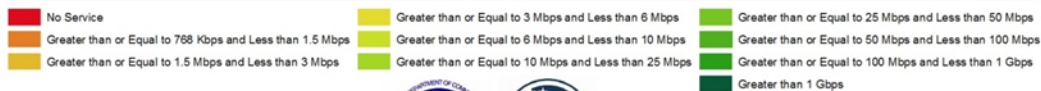
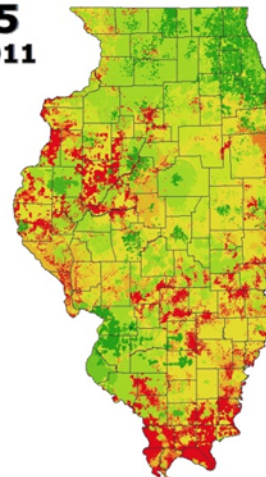
Round 4

June 30, 2011



Round 5

Dec. 31, 2011



broadbandillinois.org



0 50 100 Miles

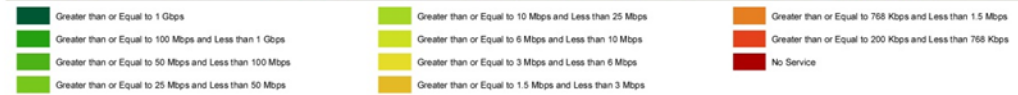
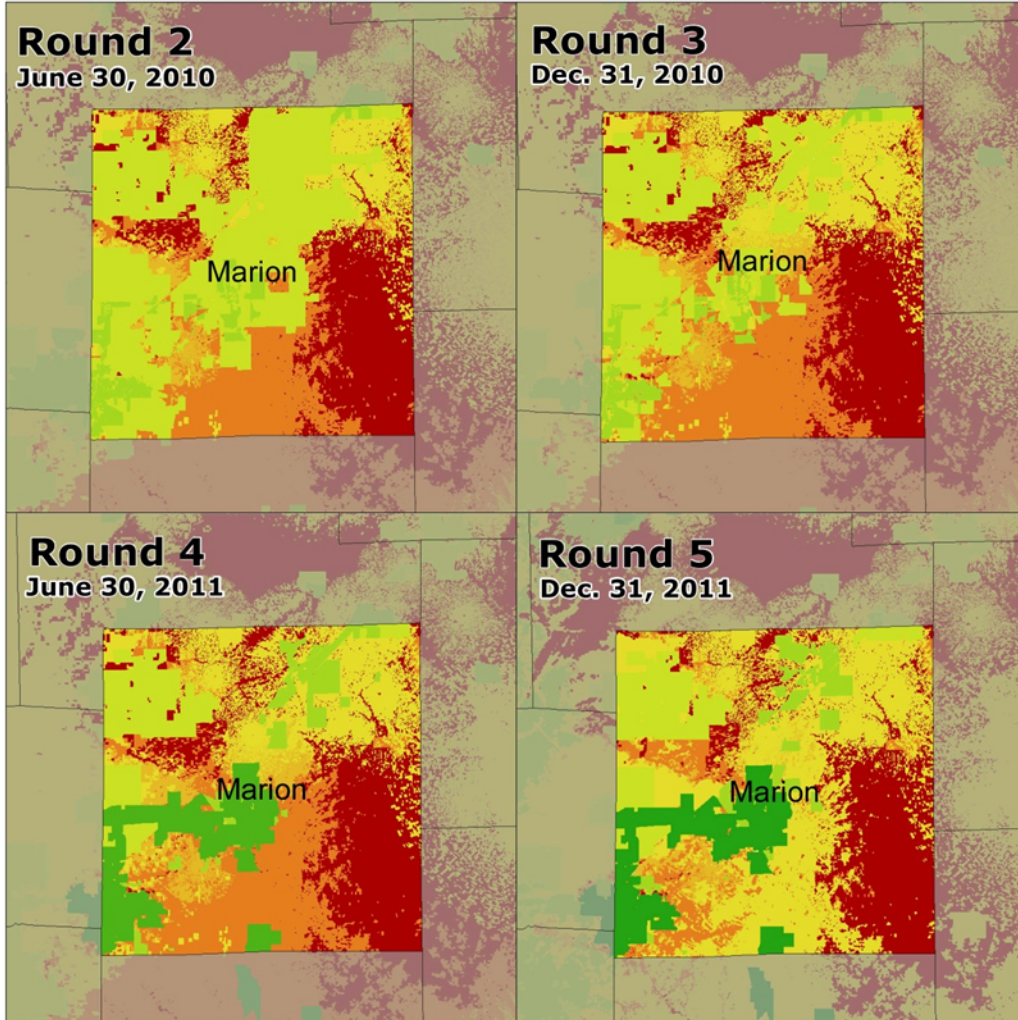


Partnership for a Connected Illinois
April 03, 2012

DISCLAIMER: This map is meant to be used for preliminary review purposes only. The information depicted on this map is based on a limited amount of available data, and thus there are inherent inaccuracies. As more complete data is collected, the map will be updated and will contain more accurate information. This map should not be used to make any decisions regarding the served, underserved, and not served areas. The NTIA definition of Broadband is greater than or equal to 768Kbps at this time.



(Excluding Satellite and Cellular)



DISCLAIMER: This map is meant to be used for preliminary review purposes only. The information depicted on this map is based on a limited amount of available data, and thus there are inherent inaccuracies. As more complete data is collected, the map will be updated and will contain more accurate information. This map should not be used to make any decisions regarding the served, underserved, and not served areas. The NTIA definition of Broadband is greater than or equal to 768kbps at this time.

Change Over Time

- Increase in Data Quality
- Increase in Infrastructure Spending by Providers
- Increase in the Number of Providers Reporting



	Provider Count
Round 5 (December 31, 2011)	203
Round 4 (June 30, 2011)	189
Round 3 (December 31, 2010)	154
Round 2 (June 30, 2010)	164

Verification

- Thumbs Up/Thumbs Down



The screenshot displays the broadbandillinois.org website interface. At the top, the logo and navigation menu are visible. The main content area features a map of a rural area with a green location marker. To the right of the map, there are three service listings with their respective speed ranges and accuracy feedback:

- Cellular One**: Terrestrial Mobile Wireless, 1.5-3 Mbps MAX, 0.7-1.5 Mbps TYP. Accuracy: 0 Yes, 5 No.
- WildBlue Communications, Inc.**: Satellite, 1.5-3 Mbps MAX, 0.2-0.7 Mbps TYP. Accuracy: 0 Yes, 5 No.
- Verizon Wireless**: Terrestrial Mobile Wireless, 0.7-1.5 Mbps MAX, 0.7-1.5 Mbps TYP, 0.2-0.7 Mbps MAX, 0.2-0.7 Mbps TYP. Accuracy: 12 Yes, 7 No.

Below the listings is a form asking "Is this service available to you at the reported speeds? Why do we ask?" with a "Send" button. A yellow box at the bottom right suggests: "Want to check a different location? Type an address in the box on the top-left."

Verification

■ Broadband Request Map



broadbandillinois

Home About **Maps** News Events Research Impact eTeams

Get involved

« Back to maps

Broadband Request Map

In an effort to help carriers and [consumers](#) throughout Illinois, we have created an outlet for consumers needing access to better broadband to reach the carriers in their area. The map on the left shows where consumers have requested this access.

If you are a consumer with no access to broadband and you are interested in finding better internet access, please [complete](#) the form here.

If you are a carrier that is not currently subscribed to our consumer request notification tool and would like to [begin](#) receiving consumer requests in your counties of service, please contact us at eteams@broadbandillinois.org.

Request broadband

© 2011 Partnership for a Connected Illinois. All rights reserved.

eTeam Booklets

- PCI Includes in Booklets:
- County Speed Tier Maps
- Provider Maps
- eTeams Find them Useful
- Shown at every eTeam Meeting
- Can be Downloaded anytime from www.BroadbandIllinois.org

- Clayton Black
eTeam Coordinator
217-886-4029
clayton.black@broadbandillinois.org

